

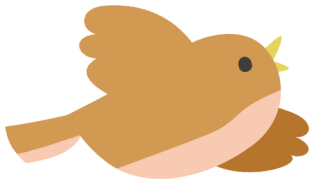
HOW TO HELP WILDLIFE

MAKE YOUR GARDEN A HAVEN

Top of the list is a source of water! An informal pond is great, but even an old washing-up basin can support a variety of wildlife: just make sure there is a way for creatures to get in and out safely.

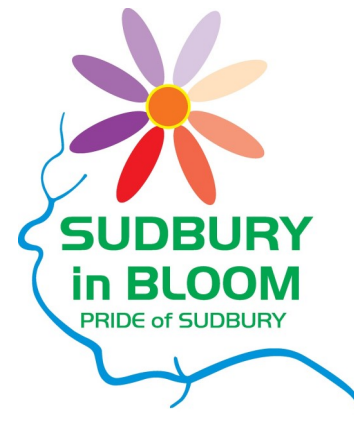


Leave it longer between grass cuts and don't worry about any "weeds" in the lawn: you're not being lazy: you're helping nature!



Add bird boxes, bug hotels and hedgehog homes. Piles of old wood provide habitat, as do compost heaps

Avoid using chemicals. The above steps will attract creatures that will deal with "pests" so no need for sprays or pellets!



HOW TO HELP WILDLIFE

WHAT TO GROW

Try to have something flowering in the garden for every month of the year to provide food for pollinators – the more flowers the better!



The RHS has really helpful lists of pollinator-friendly flowers. Follow the links from our website



Hedges provide habitat for everything from hedgehogs to birds to insects, and many provide food too

Have **berrying trees, shrubs or hedges** to help feed the birds in winter

GET INVOLVED & ENTER OUR GARDENING COMPETITION!

 www.sudburyinbloom.org.uk

 Tel/text 07957 817165



GET INVOLVED & ENTER PRIDE OF SUDBURY!

 www.sudburyinbloom.org.uk

 Tel/text 07957 817165

